

# Nimble Storage InfoSight

## Rethinking the Storage Lifecycle

### Storage Lifecycle Challenges

Enterprise storage administrators perform a wide variety of disparate tasks. They are responsible for monitoring and reporting, maintenance and support, risk assessment and alerting, as well as forecasting and planning for all of the organization's storage arrays. But with the majority of today's storage management solutions, these tasks are unconnected, manual, and cumbersome.

Traditional on-premise storage management systems may generate an abundance of raw data, but aren't able to synthesize the information into an easily consumable, actionable format. As a result, storage management tasks are disconnected and inefficient, triage and trouble-shooting are ineffective, and accurate capacity and performance planning are simply out of reach for most storage administration teams today.

### InfoSight Engine: The Power Behind the Portal

Nimble Storage has developed an entirely unique and innovative approach to the storage lifecycle that leverages the power of data sciences. The result is Nimble Storage InfoSight™, which integrates, automates, and substantially simplifies storage administrative tasks, ensuring the optimal health of all Nimble Storage arrays. Built on powerful deep data analytics technologies, the centralized InfoSight Engine monitors all Nimble Storage assets collectively from the cloud. The engine analyzes millions of data points every day to build complete insight into overall storage health.

### InfoSight Portal

The Nimble Storage InfoSight Portal is a secure, cloud-based window into the InfoSight Engine. Key features and functionality of the InfoSight Portal include:

#### Event-Based Alerting

InfoSight's intelligent alerting system enables proactive management of Nimble Storage arrays:

- **Instant Event Alerts of Storage Performance:** Administrators can select from an extensive list of events that trigger an alert, immediately placing their systems on Nimble Storage's radar for monitoring, resolution, and tracking. As a result, support cases are automatically opened, enabling swift action to either prevent or resolve critical issues
- **Daily Summaries:** A summary email of event status can optionally be sent once every day for tracking and documentation purposes

#### Performance Planning

- Detailed systems modeling helps identify performance bottlenecks, and indicates whether increasing cache or upgrading controllers would improve performance of deployed workloads
- New performance correlation analytics quickly identify leading factors contributing to performance or latency issues, eliminating what used to take up to several days of manual data collection and analysis.

#### Comprehensive Dashboard Views

The InfoSight Portal consolidates and presents complex storage health and performance information into an easy to understand, graphical format. The InfoSight Portal's intuitive dashboards include:

### Features

- Event-Based Alerting
- Comprehensive Dashboard Views
- Executive Summary Screen
- Capacity Forecasting
- Performance Planning

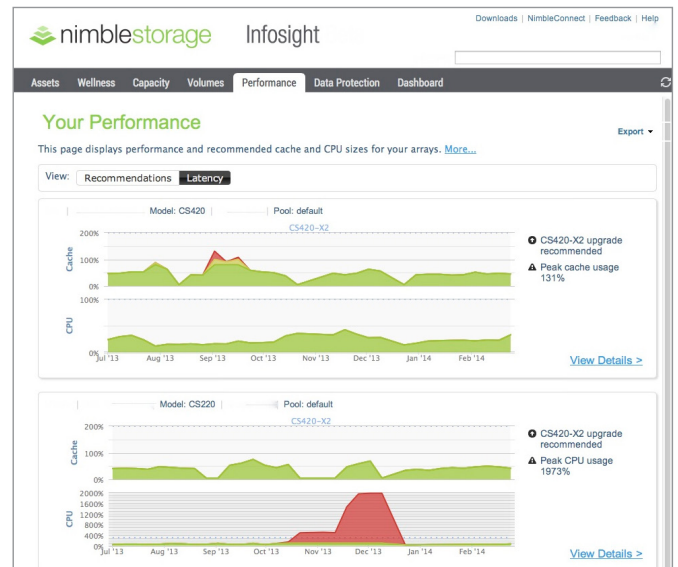
### Benefits

- **Manageability:** No agents or data collection infrastructure to install. It's in the cloud, so updates are instantly available.
- **Usability:** Insightful and actionable data is presented through intuitive dashboards.
- **Accessibility:** Access from anywhere, anytime, on any device. One-click reporting and export capabilities make it the simplest way to monitor and manage Nimble Storage environments.

**“Within a short time of using InfoSight, we have been able to monitor our storage, report on historical trends, plan for future growth, and proactively discover and remediate issues — making management very easy with limited staff.”**

Jeff Winter  
Information Systems Director  
City of Hot Springs, Arkansas

- **Assets:** Maps assets to their specific geographic locations and displays their signature information
- **Capacity:** Monitors historical capacity increases and indicates when an array is nearing capacity
- **Performance:** Shows how well the array is performing and when it is under the heaviest load. Provides drill-down information on latencies and cache hit rate
- **Volumes:** Displays detailed metrics on individual volumes, including drill-down information on space used, compression ratios, performance, and other metrics grouped by performance policy or array
- **Data Protection:** Presents the snapshot and replication configuration, along with current operational status
- **Assets:** Maps assets to their specific geographic locations and displays their signature information.
- **Support:** Tracks existing support cases and enables new case creation, if needed



Performance correlation analytics identify leading factors impacting performance, avoiding significant manual data collection and analysis.

### Executive Summary Screen

The executive summary provides a comprehensive view of storage status that includes storage and operational efficiency, data protection, and upgrade needs, enabling managers and executives to understand at a glance how well their storage is performing—including areas that need attention, if any.

### Capacity Forecasting

InfoSight's analytics provide the ability to optimize and proactively plan storage capacity through easy to understand graphical information. This enables informed decision making on storage spend.

- Powerful, predictive algorithms enable administrators to visualize organic data growth and identify when the array will approach capacity limits

## Benefits

The benefits of Nimble Storage InfoSight for administrators include easier manageability, usability, and accessibility.

- **Manageability:** Since InfoSight is cloud-based, no agents need to be installed, and no data collection infrastructure is required
- **Usability:** InfoSight enables proactive system health and support. Insightful and actionable information is presented through intuitive dashboards
- **Accessibility:** InfoSight can be accessed from anywhere, anytime, on any device. One-click reporting and export capability make it the simplest way to monitor and manage Nimble Storage environments. Customers can now also grant access to their trusted Nimble technology provider, allowing Nimble partners to leverage the same powerful information on behalf of their customers.

## Learn More About Nimble InfoSight

Nimble InfoSight is not just a better way of managing storage—it completely transforms the model for storage management. For additional information about the benefits of Nimble Storage InfoSight, visit [www.nimblestorage.com](http://www.nimblestorage.com) or email [info@nimblestorage.com](mailto:info@nimblestorage.com). Follow us @NimbleStorage on Twitter.



211 River Oaks Parkway, San Jose, CA 95134  
 Phone: 877-364-6253; 408-432-9600  
 Email: [info@nimblestorage.com](mailto:info@nimblestorage.com)  
[www.nimblestorage.com](http://www.nimblestorage.com)



© 2014 Nimble Storage, Inc. Nimble Storage, InfoSight, CASL, SmartStack, and NimbleConnect are trademarks or registered trademarks of Nimble Storage. All other trademarks are the property of their respective owners. DS-INFS-0314